

**WELCOME!**

**Welcome to Today's Workshop  
on Household Hazardous Waste  
& Batteries**

# WHY ARE YOU HERE?

- Required by law and NH Solid Waste Rules.
- Build your resume

# WHY HHW & BATTERIES?

- One of top 10 most dangerous jobs
  - 33 deaths per 100,000
  - Due to accidents and exposure to hazardous materials and heavy equipment

# TODAY'S AGENDA

- Solid Waste Operator Rule Changes
- What is HHW & Why Should You Care?
- Know the Rules of Storing HHW
- Break

# TODAY'S AGENDA

- **HHW Identifying Exercise**
- **Lessons in Cost Efficiency**
- **HHW Grant Application Process**
- **Practical Approaches to Alternative Products**

# **SOLID WASTE FACILITY OPERATOR WORKSHOP**

## **Solid Waste Operator Training Rule Changes**

**Effective July 1, 2014**

# OPERATOR TYPES

Establishes two types of operators:

## *1. Principal operator*

- Attend basic training and pass the exam.
- May be in supervisory/management position.

# OPERATOR TYPES

## *2. Assistant operator*

- Attend basic training, but do not take/pass the exam.
- Must work under supervision of principal operator.



# OPERATOR QUALIFICATIONS

- No more minimum education/experience requirements.
- Employers determine who is competent, not DES.

# TRANSITION FROM LEVEL TO STEP

- *Attendant in Training → Assistant Operator*
- *Level 1 → Principal Operator, Step 1*
- *Level 2 → Principal Operator, Step 2*
- *Level 3 → Principal Operator, Step 3*
- *Level 4 → Principal Operator, Step 4*

# SENIOR PRINCIPAL OPERATOR

*Operators who had 20+ years of certification as of 7/1/2014 are designated Senior Principal Operators.*



# STEPS

- Recognition for continuing professional development.
- Awarded automatically with renewal.
- Step increases with hours of accrued training starting July 1, 2014.

# STEPS

Step	Hours of Accumulated Continuing Professional Development
1	2.5 total
2	12.5 total
3	25 total
4	37.5 total
Senior *	50 total

\* Only for Principal Operators

# PROFESSIONAL DEVELOPMENT

**“Continuing Professional Development” - professional or technical instruction that imparts information and instruction relevant to waste management and solid waste facility operations to individuals who have already attended basic training.**

# PROFESSIONAL DEVELOPMENT

- 2.5 hour minimum for annual renewal for ALL designations.
- Must be completed in the 12 months in-between expiration dates before you are considered late.

# PROFESSIONAL DEVELOPMENT

- Repeated courses do not qualify for certification renewal or step increases.
- In-house and third party training count, provided the topic is waste-related.
- If you aren't sure if the training you want to take will count, call and ask us before you go.



# GRACE PERIOD

- There is a 90-day grace period for renewal applications
- A \$25 late fee will be assessed if your complete renewal application is received within 90 days after your certification expiration date

# BEYOND THE GRACE PERIOD

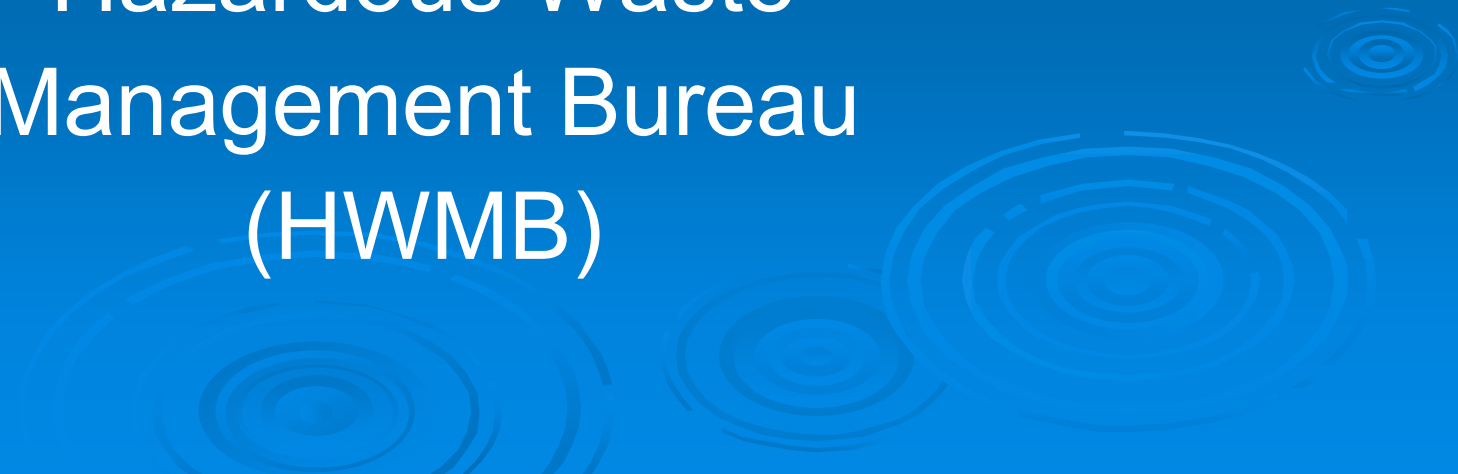
- If you miss the grace period, you must start over.
  - Come back to Basic Training; and
  - Take the test again

# SIGNATURE

- The operator's signature shall certify:
  - the information is true, complete and not misleading;
  - the operator understands s/he is subject to penalties of law for false swearing; and
  - the operator understands s/he is required to comply with RSA 149-M and SW Rules.

# Household Hazardous Waste

Tim Prospert  
Hazardous Waste  
Management Bureau  
(HWMB)



# What is a “household”?

- Created by residents of a home as a normal part of living, not an activity for substantial profit
  - Hobby v. Business
    - Logging, landscaping, trucking, vehicle repair shops, painting business, roofing business, etc...

# How is it Regulated?

- Hazardous Wastes from households are “exempt” from regulation, **but...**
- Once a municipality takes it, they become regulated. The municipality is now a **“generator”** of hazardous waste
  - Our hazardous waste rules apply to them

# Regulation

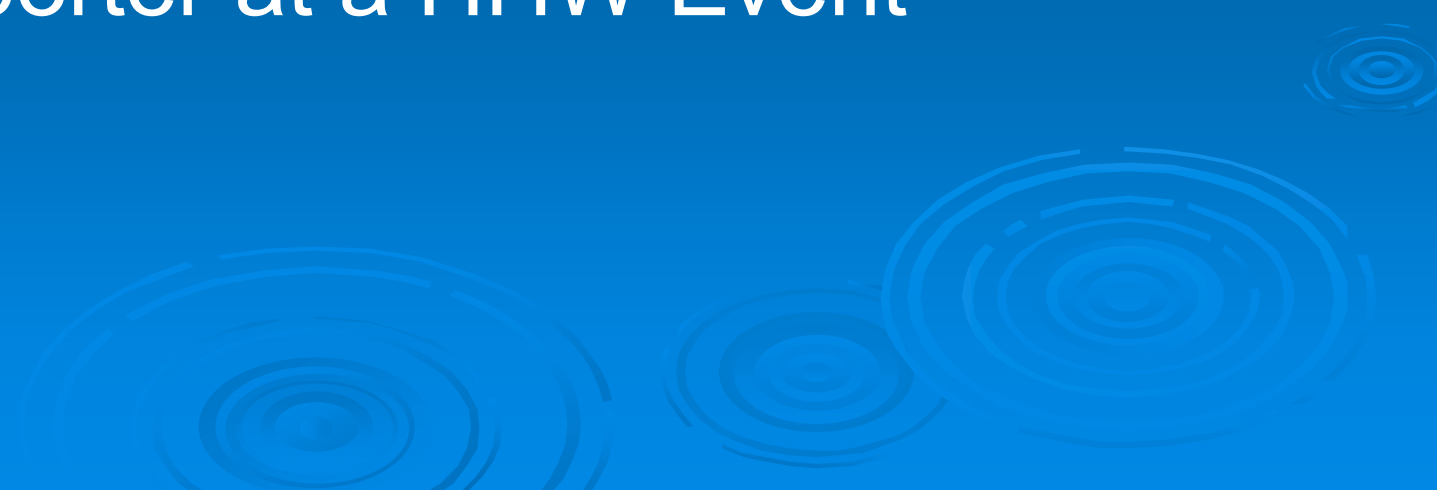
- If a municipality accepts hazardous waste from a business, it is **illegal**. These business-made wastes can only be picked up by a registered transporter or go to an official Household Hazardous Waste (“HHW”) event where a registered transporter takes the waste directly.

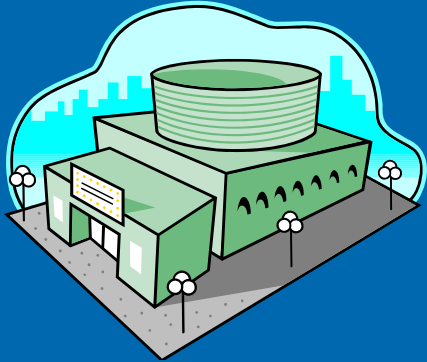
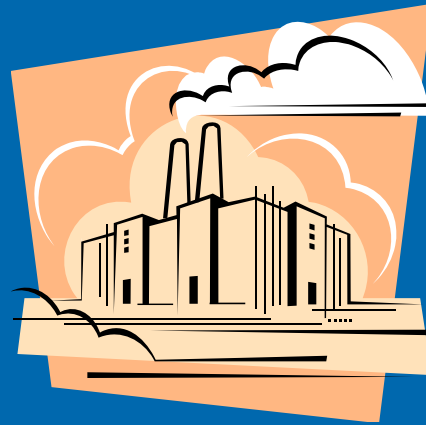
# Why do you care?

- When added altogether, households can generate large volumes of hazardous waste
- Households seldom understand the dangers of managing hazardous wastes
- It's far too easy to get rid of household hazardous waste in an improper way



# Where does it go?

- Drain
  - Landfill
  - Trash-to-Energy
  - Dedicated HHW Center
  - HW transporter at a HHW Event
- 




# Why do *I* care?

- Small amounts of hazardous waste in a household can be dangerous
- Larger amounts collected at a HHW center or event can be REALLY dangerous
  - Collectors must know what they're doing
  - Collectors are held to a higher standard

# 4 Steps to Handle Haz-waste:

## INS & Out

1. Identify
  2. Notify
  3. Store
  4. ship Out
- 

# 1. Identify if the waste is hazardous

Ignitable

Corrosive

Reactive

Toxic

I. C. R Real Trouble

# You are responsible

The generator of a waste is responsible for properly identifying if, and why, it is hazardous



# Ignitable wastes

- Catch fire VERY easily



- Ignitable wastes include chemicals called oxidizers...
- **HTH pool chemicals...**



# IGNITABLE

Alcohols



Adhesives



Spray cleaners and solvents



Oil paints





# Corrosive waste

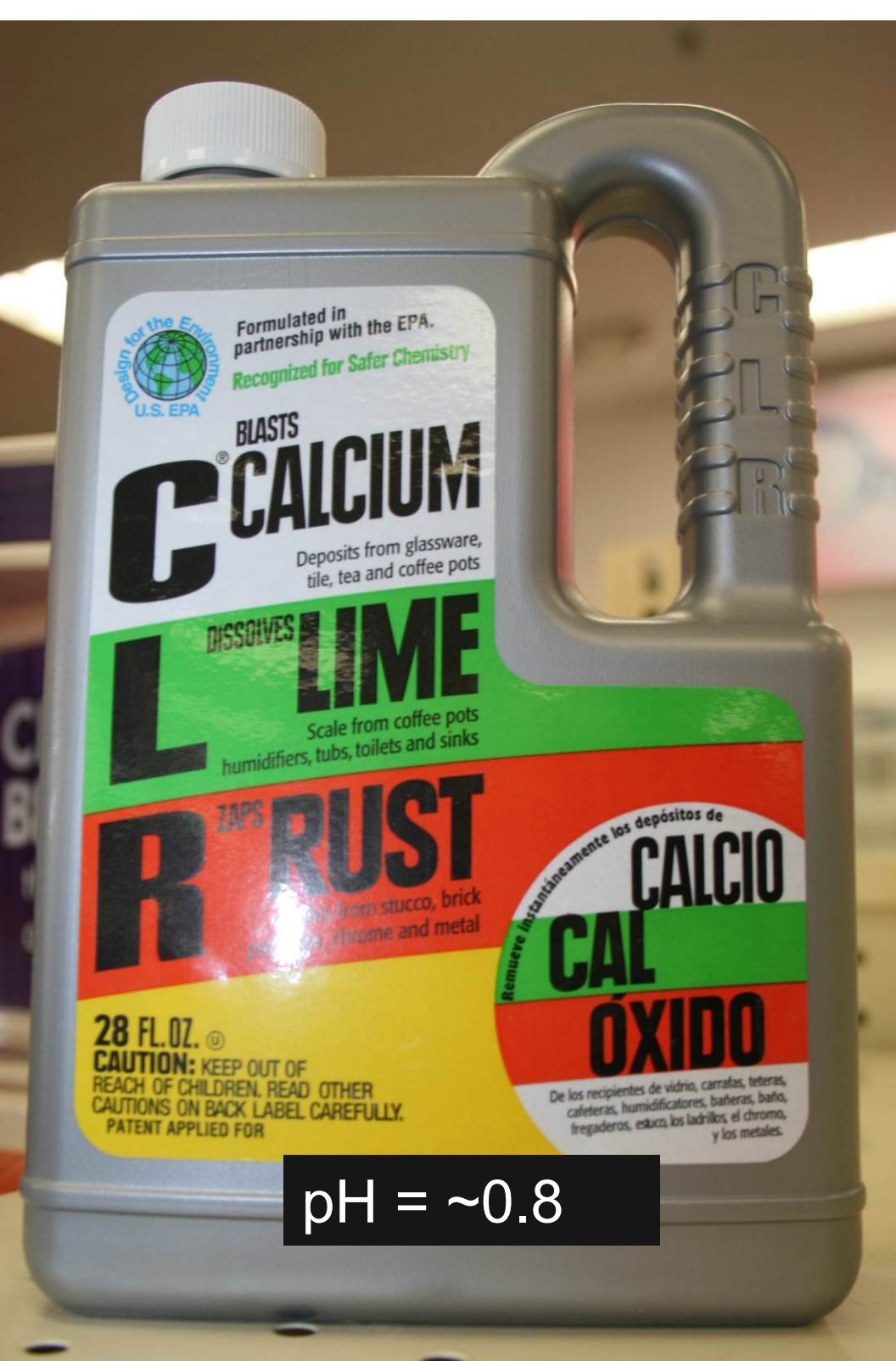
- Waste with a very low pH (“acid”)
- Waste with a very high pH (caustic, or basic)(“hydroxide”, “lye”, “hypochlorite”)

- Pool acid
- Battery acid
- Muriatic acid
- Drain Cleaners (acid)
- Drain Cleaners (basic)
- Lye (basic)
- Some other cleaners
- Paint strippers





pH = ~11.5  
– 13.5

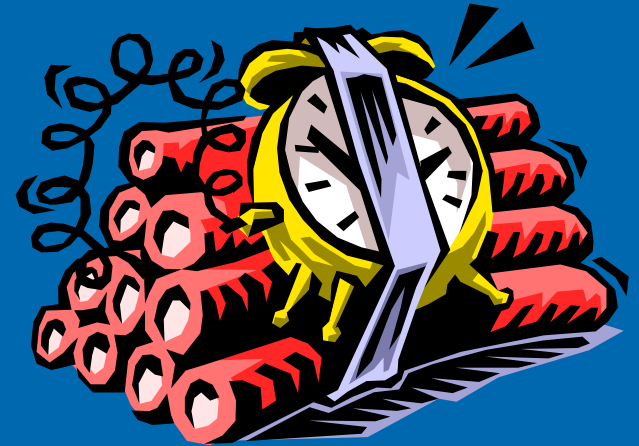


pH = ~0.8

# Reactive waste

## ➤ Things that explode

- Dynamite
- Fireworks
- Military (gunpowder, bullets, grenades...)
- Crystallized ether
- Crystallized picric acid
  - Folks bring OLD stuff to you



## ➤ Things that react badly with water or air

- Might be packaged in oil or water

# Toxic wastes

- Wastes that contain too much of certain dangerous chemicals
  - Oil/solvent-based paints
  - Some solvents and spray cleaners
  - Some prescription medicines
  - Pesticides
  - Paint strippers
  - Materials contaminated with gasoline
  - Wood preservatives





OK. You Have Some  
Hazardous Waste.

What Do You Do?



## 2. Notify DES of your situation

➤ 271-2921 or

[hazwastereporting@des.nh.gov](mailto:hazwastereporting@des.nh.gov)

# How much hazardous waste do you have?

## ➤ Size matters!

- The more you have, the more the rules.
- **“Small Quantity Generator”**
  - Less than 220 pounds of hazardous waste collected in one month
  - Fewer Rules
- **“Full Quantity Generator”**
  - 220 pounds of hazardous waste or more collected in one month or 2,200 pounds on-site
  - Many More Rules



# Some hazardous wastes don't count toward your size class

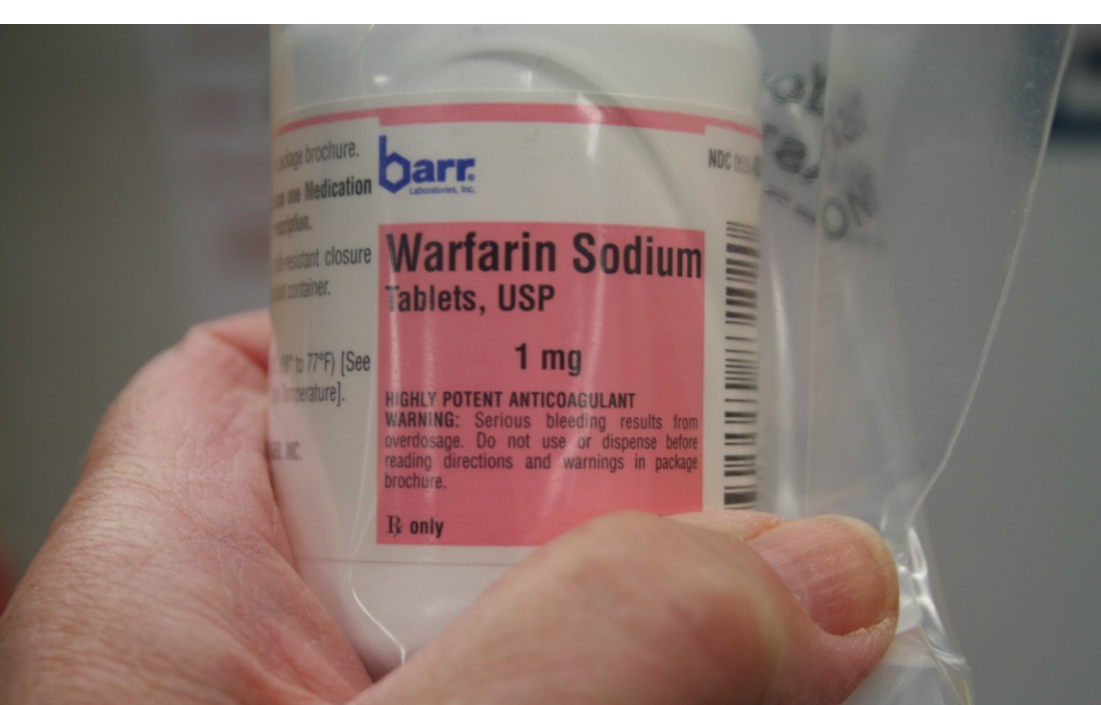
- Used oil being recycled
- Universal wastes
  - Lamps, batteries, antifreeze, CRTs
- These are Hazardous Wastes, but have easier rules

# How much is 220 pounds?

- ~35 gallons of oil-based paint
- ~24 gallons of “Drano” Max Gel
- ~19 gallons latex (coal-tar) driveway sealer
- ~33 gallons of “HTH” pool chemicals

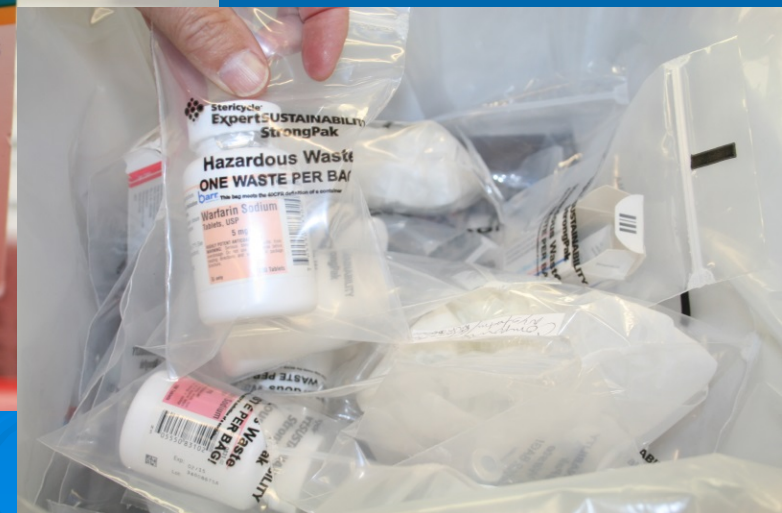
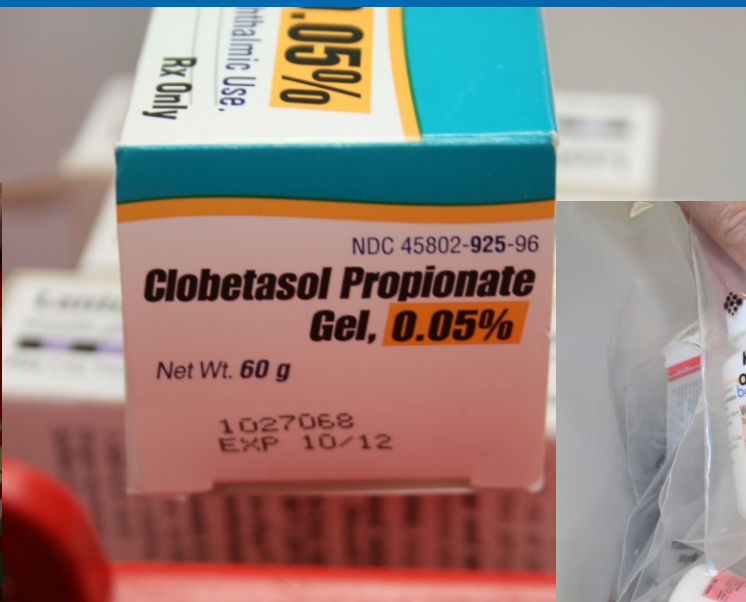
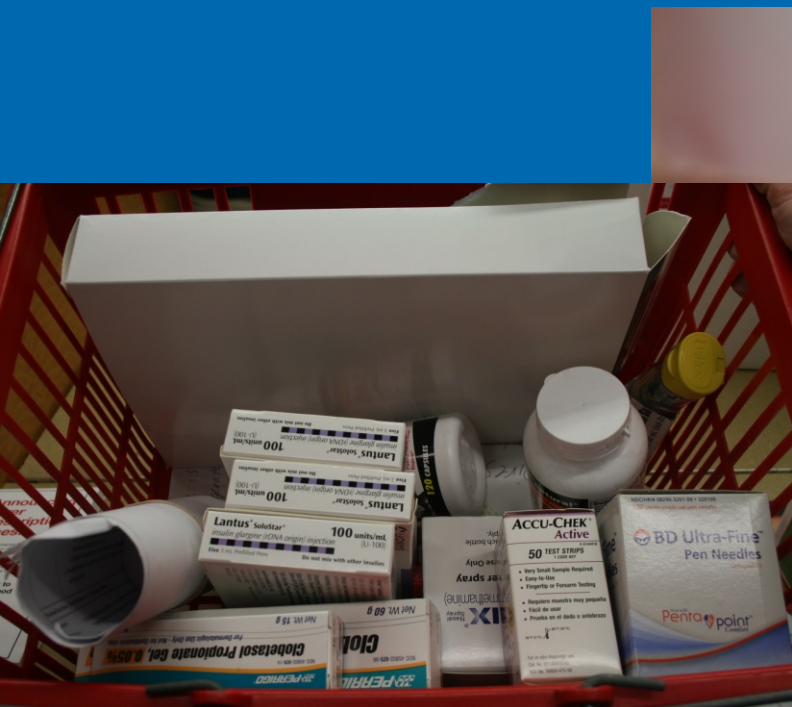
# Medicines

- Some medicines are very highly regulated hazardous wastes
  - “Coumadin”/”Warfarin” (blood thinner or rat poison)
  - Nicotine
    - Including nicotine gum
- 2.2 pounds on-site = Full Quantity Generator, lots of rules



# Handling Medicines

- Some are hazardous waste, most are not
- They can still be very dangerous
- How are they handled?



# 3. Store Wastes Safely

- **ALL** Generators **MUST**:
- Only use containers in **good condition**
  - Rust, dents, out-of-round
  - Gets along chemically with the stuff you're storing
- Keep containers **Closed and Sealed!**
  - Check gaskets, bungs, rings, etc...
- Store on **leak-proof surfaces**
  - Usually concrete or asphalt









FLAMMABILITY  
REACTIVITY

OIL RAGS  
TO BE CLEAN  
FOR RECYCLE  
FLAMMABILITY  
REACTIVITY

**HAZARDOUS WASTE**  
LAW PROHIBITS IMPROPER DISPOSAL  
AND, CONTACT THE NEAREST POLICE OR PUBLIC SAFETY  
AGENCY, OR THE U.S. ENVIRONMENTAL PROTECTION AGENCY

GENERATION DATE	EPA WASTE NO.	FO02
D.O.L. PROPER SHIPPING NAME	RQ WASTE TETRACHLOROETHYLENE	
6.1, UN1897, PG11		
		U.N. OR M.A. NO.
GENERATOR NAME	PAUL'S CLEANERS	
ADDRESS	493 AMHERST STREET	
CITY	NASHUA	STATE NH 03063
EPA I.D. NO.	NR0099357790	MANIFEST DOCUMENT NO.
PROFILE NO.		DRUM NO.

**HAZARDOUS WASTE / HANDLE WITH CARE**

PRINTED BY: MESA LABEL EXPRESS, INC. 1-800-261-2611 FAX: 208-288-2004



# Store waste safely

- **No floor drains or sinks** without secondary containment
  - 110% of the biggest container
    - 55 gallon drum = 60.5 gallons of secondary containment
  - 10% of the volume of the biggest container
- Whichever option gives bigger secondary containment



# Label containers

- The words “Hazardous Waste”
- Words to identify the contents of container or tank
  - In terms that anyone can understand!
- Labels must be accessible (**visible**)

# Outdoor Storage

- **Secondary containment** is a must
- **Cover** containers to protect from the weather and cover the secondary containment too
- **Setback** requirements
  - 50 feet from surface water (wetlands, catch basins, ponds, brooks...)
  - 75 feet from private wells
  - Outside the protective radius of public water supply wells

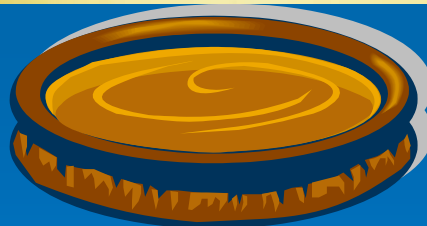
4. A roof/cover that protects the container & secondary containment

# OUTDOOR STORAGE

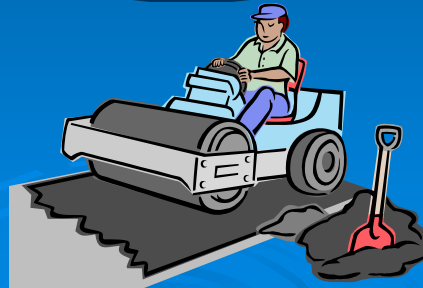
3. Good container



2. Secondary containment



1. Leak-proof surface







# “Chemical Compatibility”

- When some chemicals get together, bad things come out of it:
  - Explosions
  - Lots of heat – sometimes w/spattering chemicals
  - Fire
  - Poisonous gas
  - Asphyxiates (gases that suffocate you)

# Good or Bad?



# Swap shops and Small Marts



What goes where?  
How long has it been here?



# Do's and Don'ts

## ➤ Do:

- Keep wastes in their original containers
- Read labels for ingredients and warnings
  - Leave original labels on
- Separate different chemical types
- Separate different cleaner brands (may be incompatible)
- Put wastes in secondary containment if you can't separate them adequately or if containers are in danger of leaking

# Do's and Don'ts

## ➤ Do not:

- Mix any household chemicals
- Store different products or different brands of the same product near each other
  - All cleaners are not friendly with each other!
- Sniff test anything
- Remove original labels

# Some Examples of Bad Chemical Combinations

- Bleach with ammonia (poisonous gas)
- Acid with ammonia (poisonous gas?)
- Bleach with acid (poisonous gas?)
- Acids with bases (caustics) (heat and spattering)
- Bleach with pesticides (poisonous gas)
- Acids with sulfur or sulfate-containing wastes (poisonous, explosive gas)

<http://www.cameochemicals.noaa.gov/>





# Extra Rules if You're a Small Generator Storing a Lot of Waste

Small Quantity Generator  
“Extended Storage Rules”



# Extra rules if you have more than 220 pounds on-site

- **Inspect** all hazardous waste storage areas at least weekly
- If ignitable or reactive,
  - Keep at least **50 feet** from property line
  - “No Smoking” signs nearby
- Must maintain **two feet** of aisle space to allow inspection of containers and response

# Extra rules if you have more than 220 pounds on-site

- A means of **internal communication/alarm**
- A **telephone** that can reach an emergency responder (fire company, for instance)
- Portable **fire extinguishers** that are correct for the type of waste handled
- **Water or foam** systems to adequately deal with a fire at the hazardous waste area



# Extra rules if you have more than 220 pounds on-site

- **Telephone posting** at telephone nearest waste
  - Name and number, work and home, of the emergency coordinator
  - Phone numbers for:
    - Fire
    - Police
    - Hospital
    - NHDES emergency response (271-3899)
    - Location of fire extinguishers
    - Location of spill control
    - Location of internal alarm (if present)

# Extra rules if you have more than 220 pounds on-site

- **Arrangements with local authorities**
  - Must attempt to make arrangements as appropriate for the type and volume of waste handled at facility
    - Layout of facility
    - Properties of hazardous waste handled
    - Entrances/exits/evacuation routes
    - Who is in charge?
    - Where will you meet?
- **Document the attempt!** (registered mail?)

**MORE** rules if you have more than 2,200 pounds on-site or collect more than 220 pounds in one calendar month

“Full Quantity Generator”



# Full Quantity Generator

## ➤ Inspections

- Inspect Storage areas every 7 days or less
  - Maintain a written Inspection “Schedule”
    - What problems will be looked for
    - How often the inspection will occur
  - Maintain a written log, proving the inspections occurred
    - Date
    - Time
    - Name of inspector
    - Observations
    - Repairs or remediations



# Full Quantity Generator

## ➤ Personnel Training

- Develop a formal written program that includes specific information
- Document that all personnel who are required to get training receive it
  - Within the time frame required
  - All of the training material required

# Full Quantity Generator

## ➤ Contingency Plan

- Written guidance for responding to emergencies
  - Very specific information required
  - Requires to consider emergencies that may be encountered
    - What could happen that results in fire, explosions or releases of hazardous waste
    - Think beyond the boundaries of the facility
      - Weather events
      - Neighbors

# Outdoor Storage Requirements

- Fence or other barrier to prevent entry
- A way to control entry, such as a locked gate or door
- Sign at each entrance –
  - “Danger – Unauthorized Personnel Keep Out”

AUTHORIZED  
PERSONEL ONLY

**NO**   
**SMOKING**

WHEN THIS HORN SOUNDS  
IS ACTIVATED

TEST FAN  
PUSH 1

## 4. Ship Out the Hazardous Waste

- Self-transport, or;
- Have it picked up by a professional
  - NH-registered hazardous waste transporter
    - <http://www2.des.state.nh.us/WasteReports/Menu.aspx>
  - Use a hazardous waste shipping manifest

# Ship **OUT** Hazardous Waste

- If you:
  1. Have more than 2,200 pounds of hazardous waste stored on-site or
  2. Receive more than 220 pounds in **one month**?

You are a Full Quantity Generator. You must get it removed within **90 days**

# Self-transport HW

- DOT standards must be followed
- Bill of lading must be used
- Limited to 55 gallons, unless
  - Receive 24 hours of training in:
    - Hazardous waste handling
    - Safety
    - Hazcom and emergency procedures
    - 8 hours of annual refresher training

# OVERVIEW

## HAZARDOUS WASTES

**“Typical”  
Hazardous Wastes**

Managed  
under  
tough rules

Used Oil Being  
Recycled

Hazardous,  
but usually  
managed  
under easier  
rules

Universal Waste

Hazardous,  
but also  
usually  
managed  
under  
easier rules





*Make Your Old Man Proud  
Recycle Used Oil*

USED OIL




# Got “Used Oil”?

- KEEP IT THAT WAY!!
- Don't mix anything else in!
  - Gasoline
  - Solvents, parts washer solution
  - Paint
  - Anything in a spray can
- IT would be **BAD!**

**DANGEROUS?**



# This is NOT “used oil”

1. Anything used as a solvent or cleaner
  2. Anything used as wood preservative
  3. Oily water with less than 5% oil
  4. Oil/gas mix
- 

# How is used oil managed?

Keep containers and tanks **closed**.



# Use only containers in good condition

- USDOT approved



Mark Containers...

# USED OIL FOR RECYCLE

Used Oil  
for  
Recycle

RIGHT

Waste Oil

WRONG

# Used Oil **Outdoors**

- Keep containers, tanks, and secondary containment covered from rain and snow.









# Where does it go?

- Burn in a space heater in your own town facilities
- Have it picked up by a professional transporter registered with NHDES

<http://www2.des.state.nh.us/WasteReports/Menu.aspx>

# Universal Waste



# Types of NH Universal Waste

- Antifreeze from engine cooling systems
- Some Batteries
- Cathode ray tubes
- Some Lamps
- Mercury-containing devices
- Some Pesticides

Most universal wastes are Toxic

# Rules for USED Auto Antifreeze

Store in a container or tank that is closed

Good Container

**May contain heavy metals and cancer-causing benzene**



# BATTERIES

**Nickel-Cadmium (Ni-Cd)**



**Lithium**



**Button cell**



**Lead-acid**



**Dangerous for Heavy Metals, fire hazard, and so**







**Cathode Ray Tubes (CRTs) contain lead.**

# TYPES OF UNIVERSAL WASTE LAMPS

- Fluorescent (inc. CFL)
- Mercury vapor
- High pressure sodium

**THEY CONTAIN MERCURY!**



# Universal Waste Lamps

Do NOT crush the lamps on purpose.

It is illegal.







**UNIVERSAL WASTE**  
HAZARDOUS WASTE  
UNIVERSAL WASTE  
HAZARDOUS WASTE

**UNIVERSAL WASTE**  
HAZARDOUS WASTE  
UNIVERSAL WASTE  
HAZARDOUS WASTE

**UNIVERSAL WASTE**  
HAZARDOUS WASTE  
UNIVERSAL WASTE  
HAZARDOUS WASTE

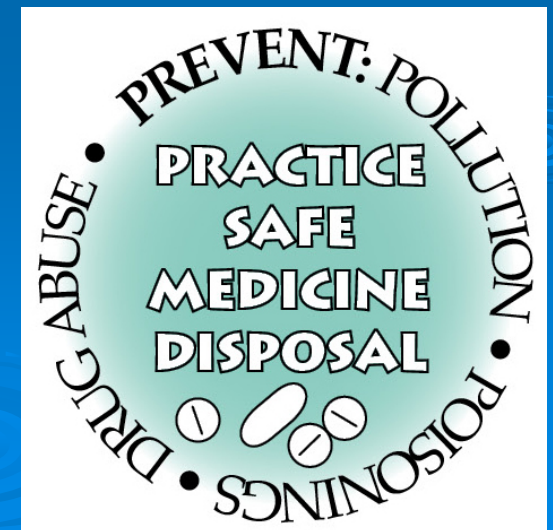
# Help!

- Hazardous Waste Hotline
  - 1-866-HAZWAST
  - 1-866-429-9278

# Household Medicine Disposal in NH

Brandon Kernen

[Brandon.Kernen@des.nh.gov](mailto:Brandon.Kernen@des.nh.gov) (603) 271-0660



# What are we talking about?

- Estimated 4 Billion prescriptions in the US every year!
- 40% go unused...
- **200 Million pounds of pharmaceutical waste each year**





# Public Health Concerns

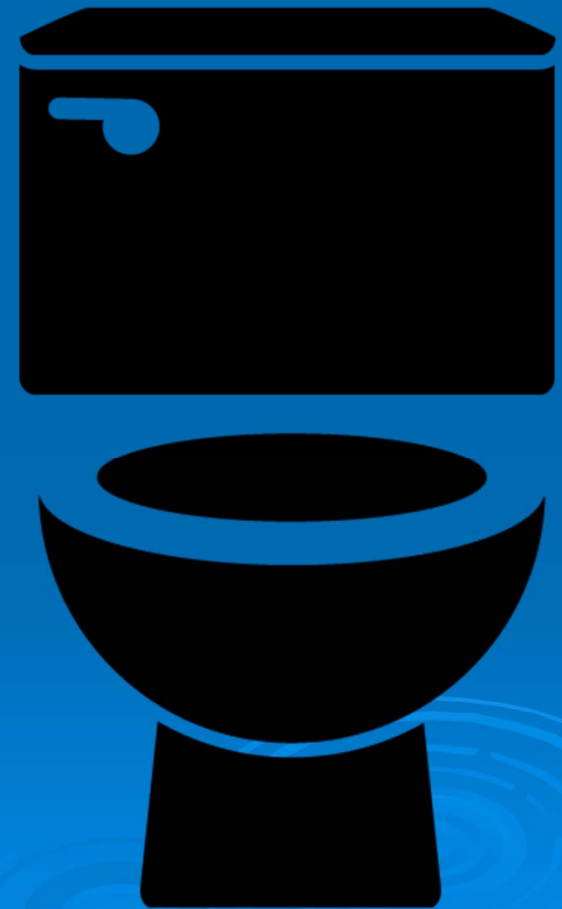
Access to other people's prescriptions lead to accidental:

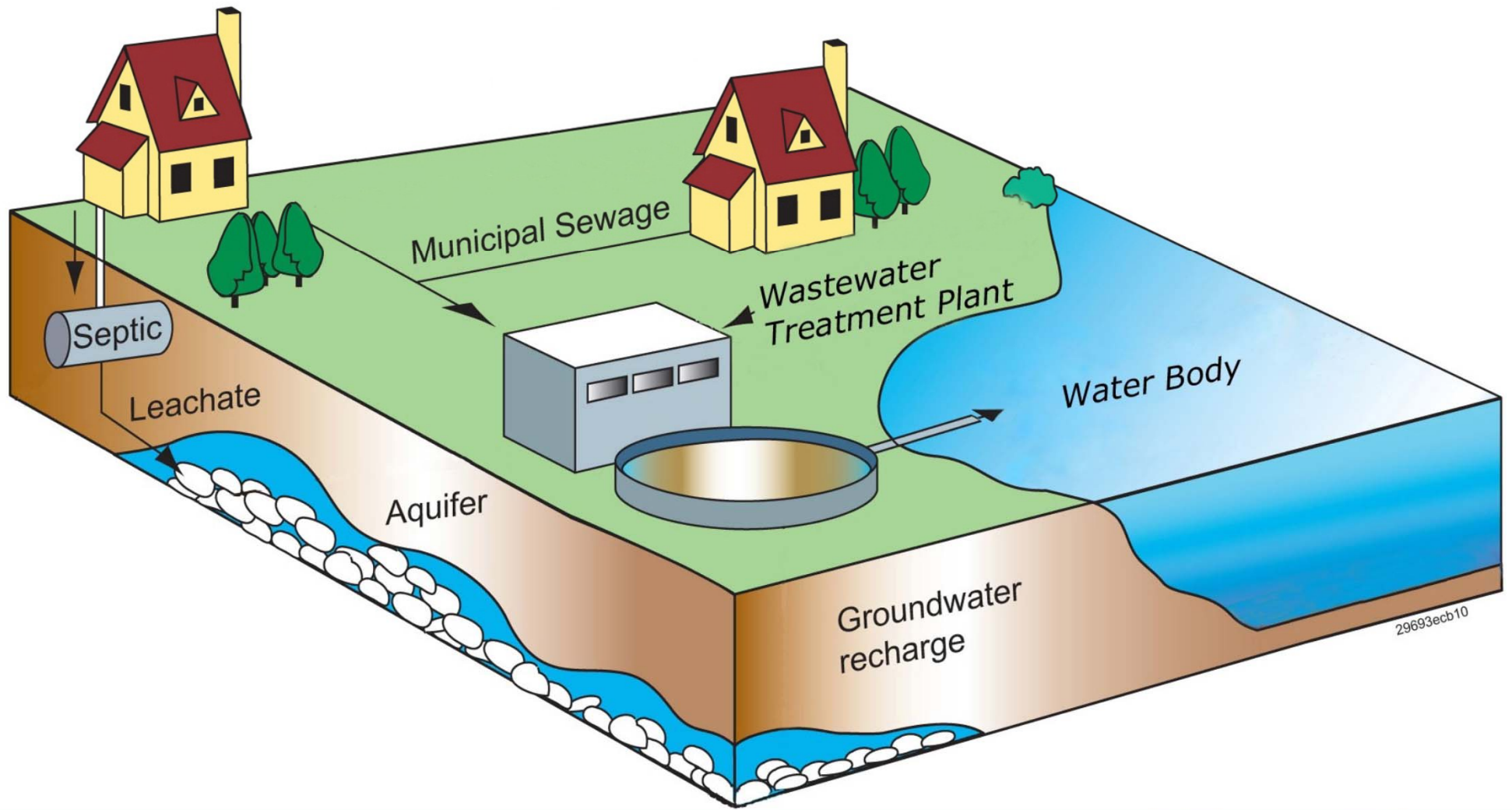
- Abuse
- Poisoning of pets
- Poisoning of kids
- Overdoses



# What happens when medicines are flushed?

- Drinking Water
- Surface Water
- Groundwater
- Watershed





29693ecb10

So what *should* you do?

DO NOT  
FLUSH!

(and don't keep any  
unwanted medicines  
in the home)



# 1<sup>st</sup> Choice – Take-Back Event



# 2<sup>nd</sup> Choice



1. Take medicines out of original container.



2. Mix with undesirable substance (add some water to solid medicines).



3. Put mixture into container with a lid or a sealable bag.

## 2<sup>nd</sup> Choice (cont.)



4. Conceal or remove personal info.



5. Place container in trash.

(Drug Disposal Guidelines, Office of National Drug Control Policy, 10/2009)

# Proper Disposal in Trash

- Addresses environmental, abuse and poisoning concerns
- Landfill solids will retain most meds or break it down; leachate is collected and treated.
- Incineration will destroy medicines.





PREVENT: POLLUTION  
PRACTICE  
SAFE  
MEDICINE  
DISPOSAL  
DRUG ABUSE • POISONINGS



# IDENTIFYING HHW

MELANIE DOIRON SWMB, CAS

# Practice What You Learned

Common (and not so common) HHWs that show up?



How do you identify them?

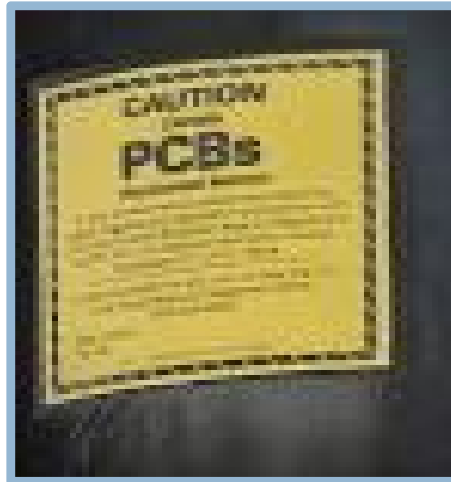
# Common HHW

- Ammonia
- Asbestos
- Oil-Based Paint
- Oven Cleaners
- Varnish
- Weed Killer
- Gasoline
- Glue
- Hair Spray
- Mercury Thermometers



<http://www.lhwmp.org/home/hhw/list.aspx>

# NOT SO COMMON HHW



# IDENTIFY THE HAZARDS



- Ignitable/Flammable
- Corrosive
- Reactive/Explosive
- Toxic
- Non hazardous
- Unknown



**\*Recognize Incompatibles**

# Compatibility Chart

## HAZARDOUS WASTE COMPATIBILITY CHART

NO	REACTIVITY GROUP NAME	1	2	3	4	5	6	7	8	9	10	11	12	13	14	15	16	17	18	19	20	21	22	23	24	25	26	27	28	29	30	31	32	33	34	101	102	103	104	105	106	107									
1	Acids, Mineral, Non-oxidizing																																																		
2	Acids, Mineral, Oxidizing																																																		
3	Acids, Organic																																																		
4	Alcohols and Glycols	H																																																	
5	Aldehydes	H	F																																																
6	Amides	H																																																	
7	Amines, Aliphatic and Aromatic	H																																																	
8	Azo Compounds, Diazo Compounds and Hydrazines	H																																																	
9	Carbamates	H																																																	
10	Caustics	H																																																	
11	Cyanides	GT	GT	GT																																															
12	Dithiocarbamates	GF	GF	GF																																															
13	Esters	H																																																	
14	Ethers	H																																																	
15	Fluorides, Inorganic	GT	GT	GT																																															
16	Hydrocarbons, Aromatic	H																																																	
17	Halogenated Organics	H																																																	
18	Isocyanates	H																																																	
19	Ketones	H																																																	
20	Mercaptans and Other Organic Sulfides	GF	GF	GF																																															
21	Metals, Alkali and Alkaline Earth, Elemental	H																																																	
22	Metals, Other Elemental & Alloys as Powders, Vapors, or Sponges	H																																																	
23	Metals, Other Elemental & Alloys as Sheets, Rods, Drops, etc.	H																																																	
24	Metals and Metal Compounds, Toxic	S	S	S																																															
25	Nitriles	GF	GF	GF																																															
26	Nitrites	H																																																	
27	Nitro Compounds, Organic	H																																																	
28	Hydrocarbons, Aliphatic, Unsaturated	H																																																	
29	Hydrocarbons, Aliphatic, Saturated	H																																																	
30	Peroxides and Hydroperoxides, Organic	H																																																	
31	Phenols and Cresols	H																																																	
32	Organophosphates, Phosphoites, Phosphodithioates	GT	GT	GT																																															
33	Sulfides, Inorganic	GF	GF	GF																																															
34	Epoxides	H																																																	
101	Combustible and Flammable Materials, Miscellaneous	H																																																	
102	Explosives	H																																																	
103	Polymerizable Compounds	H																																																	
104	Oxidizing Agents, Strong	H																																																	
105	Reducing Agents, Strong	H																																																	
106	Water and Mixtures Containing Water	H																																																	
107	Water Reactive Substances	H																																																	

### CAUTION!!

This chart is intended as an indication of some of the hazards that can be expected in mixing chemical wastes. Because of the differing reactivities of the thousands of compounds that may be encountered, it is not possible to state any definite rules and all mixtures should be treated as potentially incompatible. Hazardous waste mixtures are not classified as hazardous on the chart, and any labels indicating that the mixture cannot result in a hazard according to these instructions is to be retained on the original container and the original label should be obtained from the original owner of the waste.

EPA-600/2-80-076 April 1980  
 A METHOD FOR DETERMINING THE COMPATIBILITY OF HAZARDOUS WASTES  
 Municipal Environmental Laboratory  
 Office of Research and Development  
 U. S. Environmental Protection Agency  
 Cincinnati, Ohio 45268

**Reactivity Code**

H	Heat generation
F	Fire
G	Innocuous and non-flammable gas generation
GT	Toxic gas generation
GF	Flammable gas generation
E	Explosion
P	Violent polymerization
S	Solubilization of toxic substances
U	May be hazardous but unknown

**Example:**  
 H F GT  
 Heat generation, fire, and toxic gas generation



# IGNITABLE/FLAMMABLE

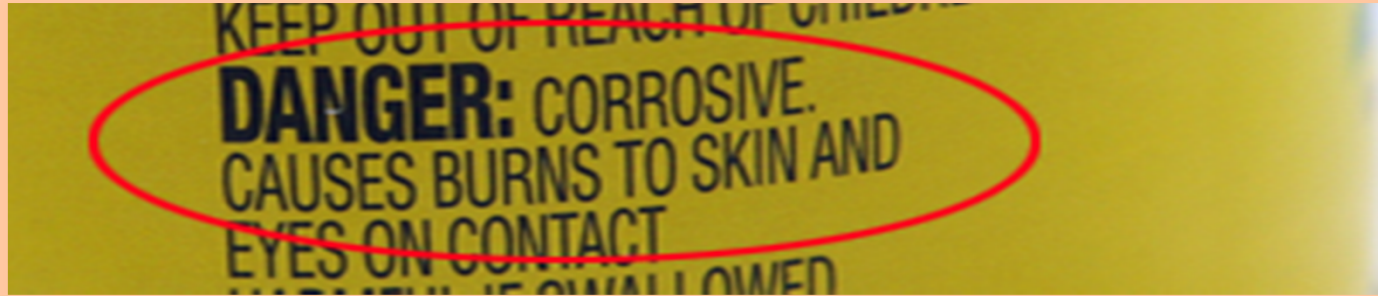
**WARNING: FLAMMABLE.**  
Read cautions on back panel.

- Burns or Ignites easily.
- The label says:
  - Combustible. Flammable.
  - Do not use near heat or flame.
  - Do not smoke while using this product.
- Paint, automotive products, thinners and other solvents are the most flammable household products.





# CORROSIVE



- **Can burn skin/tissue, clothing or other materials.**
- **The label could say:**
  - **Causes severe burns on contact.**
  - **Can burn eyes, skin or throat.**
- **Oven, drain and toilet bowl cleaners are common corrosive products.**



# REACTIVE/EXPLOSIVE

... mucosal damage may contraindicate the use of gastric lavage. **PHYSICAL AND CHEMICAL HAZARDS:** This product contains bleach. Do not use or mix with other household chemicals such as other toilet bowl cleaners, rust removers, acids or products containing ammonia. To do so will release hazardous, irritating gases. Avoid contact with clothes, fabric, carpet, wood, painted surfaces.

- Could create a poison gas when mixed with other products. Explodes when exposed to heat, shock or pressure.
- The label could say:
  - “Do not mix with other household products” or “Keep away from heat or pressure.”
- Chlorine bleach reacts with many other common cleaners. Household products should never be mixed.



# TOXIC/POISON

**KEEP OUT OF REACH OF CHILDREN**  
**DANGER:** MAY CAUSE EYE BURNS.  
SKIN IRRITANT. HARMFUL IF SWALLOWED  
OR INHALED. See back panel for additional  
precautions and First Aid information.

- Can cause short or long-term illness or death.
- The label could say:
  - Harmful or fatal if swallowed.
  - Use only in a well-ventilated area.
- Pesticides, paint thinners, many automotive products and some cleaners are toxic.

# IDENTIFYING

- Exercise/Handouts
- Packets A B C D



# EXERCISE

- **Groups-A B C D (Project Leader)**
- **Wastes-(Identify-ICRT, Unknown, Non-Hazardous)**
- **Category-Why? (10 minutes-followed by review )**

<b>Identification Data</b>			
<b>Item #</b>	<b>Hazard</b>	<b>Why?</b>	<b>Comment</b>
<b>1A</b>	<b>Non hazardous</b>	<b>Latex paint</b>	<b>wash with water</b>
<b>2A</b>	<b>Unknown</b>	<b>No label</b>	<b>resident – no information</b>
<b>3A</b>	<b>Ignitable</b>	<b>Keep away from flames</b>	<b>hair spray</b>
<b>4A</b>	<b>Corrosive</b>	<b>contains acid</b>	<b>Burns skin</b>
<b>5A</b>	<b>Toxic</b>		
<b>6A</b>	<b>Reactive</b>	<b>Do not mix with other products</b>	<b>Reacts with ammonia-causes poisonous gas</b>

# SAMPLE LABEL

**KEEP OUT OF REACH OF CHILDREN**

**DANGER: CORROSIVE.**

**FIRST AID: IF IN EYES:** Hold eye open and rinse slowly and gently with water for 15–20 minutes. Remove contact lenses, if present, after the first 5 minutes, then continue rinsing eye. **IF ON SKIN OR CLOTHING:** Take off contaminated clothing. Rinse skin immediately with plenty of water for 15–20 minutes. **IN EITHER CASE, CALL A POISON CONTROL CENTER OR DOCTOR IMMEDIATELY FOR TREATMENT ADVICE.** See back panel for additional precautionary labeling.

Hazard?

Why?

Comments?

metal and old porcelain, as this product can react with these materials and leave a "rusty" stain. Do not use on wood or painted surfaces. This product may not be able to remove mildew embedded in hard water deposits, old grout or silicone caulking. Avoid contact with aluminum, clothes, fabric, carpet or paper surfaces, as they will discolor.

**WARNING: EYE IRRITANT.** May cause skin irritation. For sensitive skin or prolonged use, wear gloves. Do not get in eyes or on clothing.

Vapors may irritate. Use only in well-ventilated areas. Avoid prolonged breathing of vapors. **Not recommended for use by persons with heart conditions or chronic respiratory problems such as asthma, emphysema or obstructive lung disease.** Due to irritating nature, may be harmful if swallowed. **FIRST AID: IF IN EYES:** Hold eye open and rinse slowly and gently with water for 15-20 minutes. Remove contact lenses, if present, after the first 5 minutes, then continue rinsing eyes. **IF ON SKIN OR CLOTHING:** Take off contaminated clothing. Rinse skin immediately with plenty of water for 15-20 minutes. **IF INHALED:** Move person to fresh air. **IF SWALLOWED:** Call a poison control center or doctor immediately. Have person sip a glassful of water if able to swallow. **DO NOT** induce vomiting unless told to do so by a poison control center or doctor. **Contains bleach. Do not use or mix this product with other household chemicals such as products containing ammonia, toilet bowl cleaners, rust removers, vinegar or acid. To do so will release hazardous gases.** Contains No Phosphorus.

**KEEP OUT OF REACH OF CHILDREN.**

**STORAGE AND DISPOSAL:**

Para Quitar Manchas de Moho: ... del atomizador a la posición de ... espere hasta que desaparezcan la acumulación pesada de moho por contacto o dos limpiezas.

**ADVERTENCIA: IRRITANTE.** Puede causar irritación a la piel con uso prolongado, utilice guantes.

Los vapores solamente en áreas bien ventiladas. Evite el uso por tiempo prolongado.

**NO RECOMENDADO PARA USO POR PERSONAS CON PROBLEMAS RESPIRATORIOS COMO ASMA, EMPHISEMA O ENFERMEDAD PULMONAR OBSTRUCTIVA.**

Debido a su naturaleza irritante, puede ser perjudicial si se traga. **PRIMEROS AUXILIOS: CON LOS OJOS:** Mantenga los ojos abiertos y enjuague con cuidado, durante 15-20 minutos, retirelos después de los primeros minutos.

**CON LA PIEL:** Retire la ropa inmediatamente y enjuague la piel con abundante agua. **CON LA INHALACIÓN:** Mueva a la persona a un área con aire fresco. **CON LA INGESTIÓN:** Llame inmediatamente al centro de control de envenenamiento.

**CONTIENE BLEANTE. No mezcle este producto con otros productos de limpieza domésticos que contengan amoníaco, limpiadores de inodoro, quitagrasas, vinagre o ácido. Esta mezcla puede liberar gases peligrosos.**

**CONTIENE NINGÚN FOSFORO.**

# How Did You Do?





# Cost Efficiency

Grantee	Bow	Concord	LRPC	Goffstown
Population	10,335	43,400	90,996	17,706
Grant	\$ 1,756	\$ 7,422	\$ 15,561	\$ 2,843
Total Cost	\$ 10,443	\$ 28,522	\$ 75,214	\$ 5,686
Town Cost	\$ 8,687	\$ 21,100	\$ 59,653	\$ 2,843
lbs collected	6,420	19,406	71,575	6,416
cost per lbs	\$ 1.63	\$ 1.47	\$ 1.05	\$ 0.89

# Household Hazardous Waste Grant Application Process



**Dean Robinson**

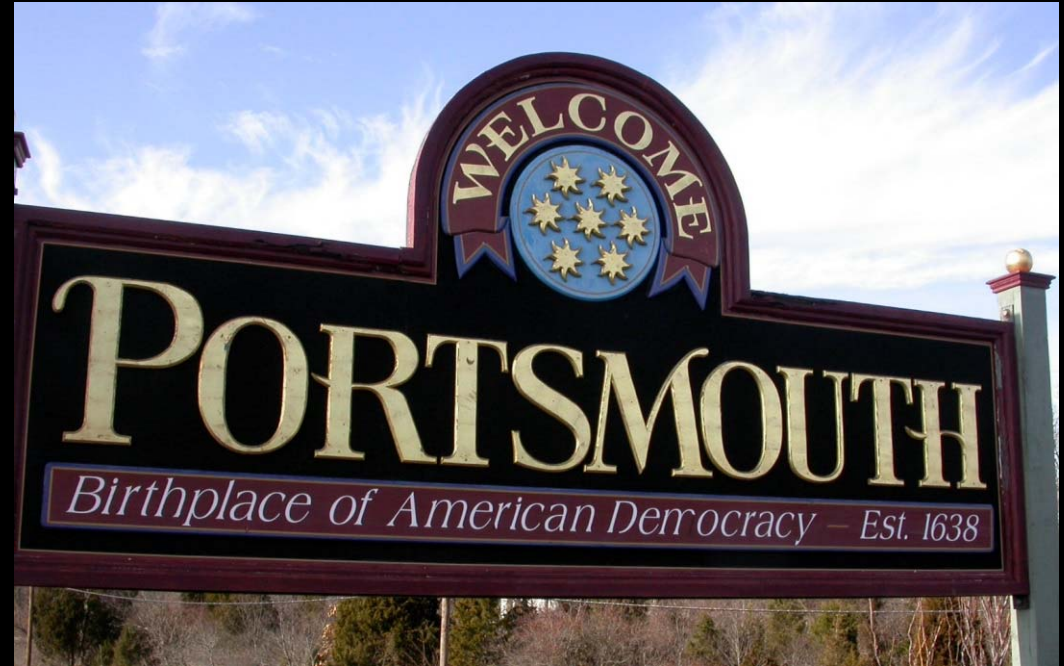
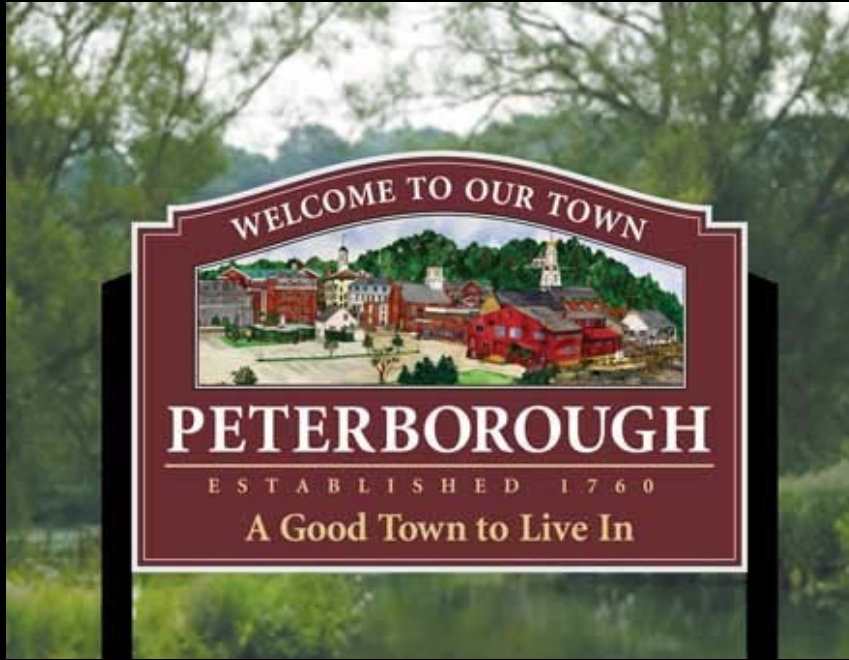
**NH Department of Environmental Services**

# Why Collect HHW?

RootFun.net



# Who Can Apply?



# What Can You be Reimbursed For?



# How Much Money Can You Get?

## Per Capita Rates

\$ 0.125

Single town holding a single event

\$ 0.177

Single town holding multiple events or multiple towns holding shared event(s.)

\$ 0.222

Permanent HHW "storage" facility used to store partially filled drums & containers.

\$ 0.264

Permanent HHW facility used to actively collect waste in absence of HW hauler.



**Remember...**

**A permanent HHW facility must meet hazardous waste generator standards**

# DES Web-Site



PUBLIC GOVERNMENT BUSINESS A to Z LIST

- DES Home
- A to Z List
- About DES
- Media Center
- Public
- Government
- Business
- Programs
- Rules/Regulatory
- Contact Us



Drinking Water Advisory



Follow us on twitter



[Office of the Commissioner](#) > [Programs/Bureaus/Units](#) >

## Household Hazardous Waste Program

The Household Hazardous Waste (HHW) Program is working toward changing the way New Hampshire's residents purchase, use and dispose of hazardous products, with a goal of reducing the amount or "toxicity" of the products they purchase. We work extensively with homeowners and municipalities, so for your benefit all information on the HHW home page has been divided into those two categories. Please read more to learn what the HHW program is doing for New Hampshire's homeowners and municipal solid waste facilities. [more...](#)

### Hot Topics

- [Household Hazardous Waste Collections](#) - July 1, 2013 - June 30, 2014
- [Household Hazardous Waste Collections](#) - July 1, 2012 - June 30, 2013
- [National Prescription Drug Take-Back Day](#)

### Publications [\(Complete List\)](#)

- [Businesses/SOGs](#)
- [Homeowners](#)
- [Municipalities](#)

### Rules/Regulatory

- [Env-Hw 1000 Hazardous Waste Cleanup Fund](#)

### Education/Outreach

- [Audio Visual](#)
- [Curricula](#)
- [Videos For Loan](#)
- [Written Materials](#)

### Training [\(Complete List\)](#)

### Forms/Applications [\(Complete List\)](#)

- [Certificate of Authority Guidance](#)
- [HHW Collection Guidance](#)
- [HHW Grant Application](#)
- [HHW Invoice Checklist](#)
- [HHW Report Form](#)
- [Insurance Example](#)



search this site

#### HHW Program

- Program Home
- Overview
- Hot Topics
- Publications
- Rules/Regulatory
- Education/Outreach
- Training
- Forms/Applications
- Grants/Loans
- FAQs
- Contact Us

#### Office of the Commissioner

- Office Home
- Office Overview
- Programs/Bureaus/Units
- Publications
- Contact Us

#### The Department

- Commissioner's Office
- Air Resources Division
- Waste Management Div.
- Water Division
- Boards and Committees


DES Calendar									
				1	2	3			
4	5	6	7	8	9	10			
11	12	13	14	15	16	17			
18	19	20	21	22	23	24			
25	26	27	28	29	30				

# What to Submit

1. Grant Application (Sent to DES by Feb 1<sup>st</sup>)
2. Signed & notarized contract (60 days before date of event)
3. Insurance Statement (with contract)
  1. Liability
  2. Worker's Compensation
4. Certificate of Authorization (with contract)



# The Parts of The Grant Application



## Household Hazardous Waste Program

**HHW COLLECTION GRANT APPLICATION FORM**

To obtain a hazardous waste cleanup fund grant monies for a household hazardous waste collection projects conducted from July 1, 2014 through June 30, 2015

**APPLICATION INSTRUCTIONS:**

- 1) Complete all five sections and submit them to DES on or before February 1.
- 2) All funds will be distributed in accordance with Env-Wm 1000.
- 3) Incomplete or late applications will not be considered.

To be eligible for grant funds, you must conduct an educational campaign, which is more than simply promoting your collection. Your educational component must include information about ways to reduce HHW generation (pollution prevention) as well as the potential dangers and proper means of disposal of HHW. If you have questions, please call the HHW Coordinator at 271-2047. DES has materials available to help you with your educational component.

---

Grant funds are distributed using a tiered rate. Please review your program overview to determine which description best fits. Use this rate in requesting state Household Hazardous Waste grant monies in Section IV, 3:

- \$0.26 per-capita\* for programs with an active\*\* permanent HHW facility used to actively collect waste in absence of a hazardous waste transporter.
- \$0.22 per-capita\* for programs with a permanent HHW "storage" facility used to store partially filled drums & containers between collection events.
- \$0.17 per-capita\* for programs with more than one HHW collection per year or serving more than one community.
- \$0.12 per-capita\* for HHW collection programs that serve one community on one day annually.

\*per-capita rates fluctuate each fiscal year depending on the number of grant applicants.

\*\* For the purposes of this application, a program with an "active" permanent HHW facility is defined as: A program which performs at least 1/3 (one third) of its collection events at the HHW facility without incurring costs from a third-party vendor such as a hazardous waste transporter.

Household Hazardous Waste Collection Grant Application 10/2013 Page 1

**SECTION I: (GENERAL INFORMATION)**

1. Name of municipality: \_\_\_\_\_
2. Municipality's Mailing Address: \_\_\_\_\_  
(Street)  
\_\_\_\_\_  
(Town / City) (State) (Zip Code)
3. Date of Application: \_\_\_\_\_  
(Applications due to DES Department of Environmental Services on or before February 1, 2015)
4. Primary Contact: Name: \_\_\_\_\_  
Title: \_\_\_\_\_  
Telephone: \_\_\_\_\_ Fax: \_\_\_\_\_  
E-mail address: \_\_\_\_\_ @ \_\_\_\_\_
5. Secondary Contact Name: \_\_\_\_\_  
Title: \_\_\_\_\_  
Telephone: \_\_\_\_\_ Fax: \_\_\_\_\_  
E-mail address: \_\_\_\_\_ @ \_\_\_\_\_
6. Who should the public contact with questions? \_\_\_\_\_

**SECTION II (EVENT DETAILS)**

1. Project(s) Proposed Date, Time and location:

Date	Time	Address	City/Town

Household Hazardous Waste Collection Grant Application 10/2013 Page 2

2. Do you have a limit on the amount of waste that can be brought to the collection? Y / N  
If yes, what is the limit? \_\_\_\_\_
3. For events with multiple collection sites: How many sites do you have? \_\_\_\_\_  
Can residents of any participating town use any collection sites? Y / N \_\_\_\_\_  
(If so, please list which towns must use which site below.)

City/Town	Require Site(s)

4. Will you allow a limited number of residents from non-participating communities to drop off wastes (at their expense) during your collection? Y / N \_\_\_\_\_
5. Will you allow pre-registration for small businesses to drop off wastes (at their expense) during your collection? Y / N \_\_\_\_\_

It is within your right to refuse service to any private business or non-resident who has not made prior arrangements with you and your contracted transporter.

**SECTION III (SERVICE AREA)**

1. Communities participating and population to be served:

City/Town	Population	City/Town	Population	City/Town	Population

2. Total Population: \_\_\_\_\_

Household Hazardous Waste Collection Grant Application 10/2013 Page 3

**SECTION IV: (PROJECT COST AND REVENUE ESTIMATES)**

1. Cost of Public Education: \_\_\_\_\_ \$ \_\_\_\_\_  
Rate based on community size (see Household Waste Factsheet 10/2013)
2. Cost of Hazardous Waste Contractor: \_\_\_\_\_ \$ \_\_\_\_\_  
(Include fixed cost estimated disposal cost)
- Total Estimated Project Cost (Add 1 and 2): \_\_\_\_\_ \$ \_\_\_\_\_
3. State of NH grant monies requested: \_\_\_\_\_ \$ \_\_\_\_\_  
(Grant monies available as set out in DESW collection overview)
4. Matching Monies (list sources and amounts):
 

Community Funding: \$ _____	County Funding: \$ _____
Solid Waste District Funding: \$ _____	Other Funding: \$ _____
Total Matching Monies: \$ _____	
5. Total Revenue (add 3 and 4): \_\_\_\_\_ \$ \_\_\_\_\_

**SECTION V: ATTACHMENTS**

Please include:

1. A general description of the project, including:
  - How the applicant will allocate the grant award.
  - How the applicant will fulfill the grant award's dollar-for-dollar match requirement.
2. Show and explain how the applicant will fulfill the public education component, including:
  - Informing the public about reducing HHW generation (pollution prevention).
  - Potential dangers of HHW.
  - Proper disposal of HHW.
3. In the case of an application serving more than one municipality, please attach a Letter of Commitment from each participating community.

**SECTION V: (AUTHORIZATION)**

\*\*\* If E-mailing this application, an original signature is not required\*\*\*

I certify that, to the best of my knowledge, all of the foregoing information is complete and accurate.

(Signature of Authorized Person from Section 1) (Date) \_\_\_\_\_

E-mail application to: [hhw@des.nh.gov](mailto:hhw@des.nh.gov)

OR

Mail application to: NH Dept. of Environmental Services  
PO Box 93  
Concord, NH 03302-0095  
Attn: HHW Coordinator

Please contact us with any questions you have.  
Telephone: (603) 271-2047  
E-mail: [hhw@des.nh.gov](mailto:hhw@des.nh.gov)  
<http://des.nh.gov/central-services/central-services-2662933873-1606.htm>

Household Hazardous Waste Collection Grant Application 10/2013 Page 4

# The Math

## SECTION III (SERVICE AREA)

1. Communities participating and population to be served:

City/Town	Population	City/Town	Population	City/Town	Population
Happy Town	5,000				
Grumpy Town	15,000				

2. Total Population:   $20,000 \times \$0.177 = \$3,540$

## SECTION IV: (PROJECT COST AND REVENUE ESTIMATES)

1. Cost of Public Education: \$ 500  
(Educational Component required per NH Hazardous Waste Rules, Env-Wm 1003.08.)
2. Cost of Hazardous Waste Contractor: \$ 9,000  
(Include fixed and estimated disposal costs.)
- Total Estimated Project Cost (Add 1 and 2): \$ 9,500
3. State of NH grant monies requested: \$ 3,540  
(Grant monies available at the rate based on HHW collection overview)
4. Matching Monies (list sources and amounts):  
 Community Funding: \$5,000 (Grumpy Town) County Funding: \$ \_\_\_\_\_  
 Solid Waste District Funding: \$ \_\_\_\_\_ Other Funding: \$ 1,000 \$5 Car Fee (5%)
- Total Matching Monies: \$ 6,000
5. Total Revenue (add 3 and 4): \$ 9,540

# The Parts of The Grant Agreement

Subject: GRANT OF MATCHING FUNDS PURSUANT TO RSA 147-B:1A

**GRANT AGREEMENT**  
The State of New Hampshire and the Grantee hereby mutually agree as follows:

**GENERAL PROVISIONS**

**1. IDENTIFICATIONS**

1.1 State Agency Name Department of Environmental Services	1.2 State Agency Address 20 Home Drive Concord, NH 03301
1.3 Grantee Name Term of Bow	1.4 Grantee Address 10 Overhill Road Bry, NH 03034
1.5 Effective Date Upon G&C approval	1.6 Completion Date June 30, 2012
1.7 Audit Date N/A	1.8 Grant Limitation \$1,872
1.9 Grant Office for State Agency Don F. Robinson II, RIV Coordinator NH Department of Environmental Services	1.10 State Agency Telephone Number 603-771-3247
1.11 Grantee Signature	1.12 Name & Title of Grantee Signer
1.13 Acknowledgment: State of New Hampshire, County of Rockingham On _____ before the undersigned officer, personally appeared _____, or satisfactorily proved to the person whose name is signed in block 1.11, and acknowledged that he executed this document in the capacity indicated in block 1.11.	
1.14 Signatures of Notary Public or Justice of the Peace (See)	
1.15.1 State Agency Signature(s)	1.15.2 Name/Title of State Agency Signer(s) Thomas S. Brund, Commissioner
1.16 Approval by Attorney General's Office (Form, Robinson and Executive) By: _____ Date: _____	1.17 Approval by the Governor and Council By: _____ Date: _____

Page 1 of 8

Contractor Initials \_\_\_\_\_  
Date \_\_\_\_\_

**2. SCOPE OF WORK.** To manage the grant funds provided by the state of New Hampshire, acting through the agency identified in block 1.1 (hereinafter referred to as "the State"), pursuant to RSA 147-B:1, the Grantee identified in block 1.3 (hereinafter referred to as "the Grantee"), shall perform the work identified and more particularly described in the scope of work attached hereto as EXHIBIT A (the scope of work being referred to as "the Project").

**3. AREA COVERED.** Except as otherwise specifically provided for herein, the Grantee shall perform the Project in, and with respect to, the state of New Hampshire.

**4. EFFECTIVE DATE, COMPLETION OF PROJECT.**

4.1 This Agreement, and all obligations of the parties hereunder, shall become effective on the date in block 1.5 or on the date of approval of this Agreement by the Governor and Council of the State of New Hampshire whichever is later (hereinafter referred to as "the Effective Date").

4.2 Except as otherwise specifically provided for herein, the Project, including all reports required by this Agreement, shall be completed in ITT's entirety prior to the date in block 1.6 (hereinafter referred to as "the Completion Date").

**5. GRANT AMOUNT, LIMITATION ON AMOUNT, VOUCHER PAYMENT.**

5.1 The Grant Amount is identified and more particularly described in block 1.8, annex hereto.

5.2 The amount of any voucher payment shall be as set forth in EXHIBIT B.

5.3 In accordance with the provisions set forth in EXHIBIT B, and in consideration of the satisfactory performance of the Project, as determined by the State, and as limited by subparagraph 2.5 of these general provisions, the State shall pay to the Grantee the Grant Amount. The State shall withhold from the amount otherwise payable to the Grantee under this subparagraph 2.5 those sums required, or permitted, to be withheld pursuant to N.H. RSA 807:6 through 7.

5.4 The State shall pay to the Grantee any amount that is the subject of the Grant account shall be the only, and the complete, compensation to the Grantee for all expenses, of whatever nature, incurred by the Grantee in the performance hereof, and shall be the only, and the complete, compensation to the Grantee for the Project. The State shall have no liability to the Grantee other than the Grant Amount.

5.5 Notwithstanding anything in this Agreement to the contrary, and notwithstanding any award of compensation, in no event shall the total of all payments authorized, or actually made, hereunder exceed the Grant limitation set forth in block 1.8 of these general provisions.

**6. COMPLIANCE BY GRANTEE WITH LAWS AND REGULATIONS.** In connection with the performance of the Project, the Grantee shall comply with all statutes, laws, regulations, and orders of federal, state, county, or municipal authorities which shall impose any obligations or duty upon the Grantee, including the acquisition of any and all necessary permits, licenses, insurance, transportation, telephone calls, and digital materials and services. Such accounts shall be supported by receipts, invoices, bills and other similar documents.

**7. RECORDS AND ACCOUNTS.**

7.1 Between the Effective Date and the date seven (7) years after the Completion Date the Grantee shall keep detailed accounts of all expenses incurred in connection with the Project, including, but not limited to, costs of administration, transportation, insurance, telephone calls, and digital materials and services. Such accounts shall be supported by receipts, invoices, bills and other similar documents.

7.2 Between the Effective Date and the date seven (7) years after the Completion Date, at any time during the Grantee's normal business hours, and as often as the State shall demand, the Grantee shall make available to the State all records pertaining to matters covered by this Agreement. The Grantee shall permit the State to audit, examine, and reproduce such records, and to make copies of all contracts, invoices, materials, receipts, records, or personal data that items is heretofore defined, and other information relating to all matters covered by this Agreement. As used in this paragraph, "Grantee" includes all persons, natural or fictional, affiliated with, controlled by, or under common ownership with, the entity identified as the Grantee in block 1.3 of these general provisions.

**8. PERSONNEL.**

8.1 The Grantee shall, at its own expense, provide all personnel necessary to perform the Project. The Grantee warrants that all personnel engaged in the Project shall be qualified to perform such Project, and shall be properly licensed and authorized to perform such Project under all applicable laws.

8.2 The Grantee shall not hire, and it shall not permit any subcontractor, subgrantee, or other person, firm or corporation with whom it is engaged in a combined effort to perform such Project, to hire any person who has a contractual relationship with the State, or who is a State officer or employee, elected or appointed.

8.3 The Grant office shall be the date the representative of the State hereunder. In the event of any dispute hereunder, the representative of the State by the Grant Office, and his or her decision on any dispute, shall be final.

**9. DATA RETENTION OR DATA ACCESS.**

9.1 As used in this Agreement, the word "data" shall mean all information and things developed or obtained during the performance of, or acquired, or developed, or obtained during the performance of, or acquired or developed by means of, this Agreement, including, but not limited to, all media, reports, files, documents, records, maps, charts, sound recordings, video recordings, personal expenditures, drawings, analyses, public representations, computer programs, computer programs, forms, lists.

**15. ASSIGNMENT AND SUBCONTRACTS.** The Grantee shall not assign, or otherwise transfer any interest in this Agreement without the prior written consent of the State. None of the Project Work shall be subcontracted or subgranted by the Grantee other than as set forth in Exhibit A without the prior written consent of the State.

**16. INDEMNIFICATION.** The Grantee shall defend, indemnify, and hold harmless the State, its officers and employees, from and against any and all losses suffered by the State, its officers and employees, and any and all claims, liabilities or penalties asserted against the State, its officers and employees, by or on behalf of any person, on account of, based on, resulting from, arising out of or which may be claimed to arise out of the acts or omissions of the Grantee of subcontractor, or subgrantee, or other agent of the Grantee. Notwithstanding the foregoing, nothing herein contained shall be deemed to constitute a waiver of the sovereign immunity of the State, which immunity is hereby reserved to the State. This consent shall survive the termination of this agreement.

**17. INSURANCE AND BOND.**

17.1 The Grantee shall, at its sole expense, obtain and maintain in force, or shall require any subcontractor, subgrantee or employee performing Project work to obtain and maintain in force, both for the benefit of the State, the following insurance:

17.1.1 general workers' compensation and employee liability insurance for all employees engaged in the performance of the Project, and

17.1.2 comprehensive public liability insurance against all claims of bodily injuries, death or property damage, in amounts not less than \$2,000,000 per bodily injury or death, any one incident, and \$500,000 for property damage in any one incident; and

17.1.3 the policies described in subparagraph 17.1 of this paragraph shall be obtained from employees in the State of New Hampshire, issued by underwriters acceptable to the State, and authorized to do business in the State of New Hampshire. Each policy shall contain a clear prevailing condition of modification of the policy which shall not in (1) any way retroactively be amended by the State.

**18. WAIVER OF BREACH.** No failure by the State to enforce any provisions hereof shall constitute a breach of this Agreement, nor shall any such failure constitute a waiver of any right of Default that shall be deemed a waiver of its rights with regard to the Event, or any subsequent Event. No express waiver of any Event of Default shall be deemed a waiver of any provisions hereof.

20. **AMENDMENT.** This agreement may be amended, waived or discharged only by an instrument in writing signed by the parties hereto and only after approval of such amendments, waiver or discharge by the Governor and Council of the State of New Hampshire.

21. **CONSTRUCTION OF AGREEMENT AND LEGAL.** This Agreement shall be construed in accordance with the law of the State of New Hampshire, and in binding upon and to the benefit of the parties and their respective successors and assigns. The caption and contents of the "subject" blank are used only as a matter of convenience, and are not to be construed a part of this Agreement, or to be used in determining the intent of the parties hereto.

22. **THIRD PARTIES.** The parties hereto do not intend to benefit any third parties and this Agreement shall not be construed to confer any such benefit.

23. **ENTIRE AGREEMENT.** This Agreement, which may be executed in a number of counterparts, each of which shall be deemed an original, comprises the entire agreement and understanding between the parties, and supersedes all prior agreements and understandings relating hereto.

Page 4 of 8

Contractor Initials \_\_\_\_\_  
Date \_\_\_\_\_

**EXHIBIT A**  
**List of Services**

1. The Grantee shall conduct the collection portion of its Project for Bow and Dunbarton, in accordance with the terms and conditions of a contract which incorporates, at a minimum, all of the provisions set forth in Section 3 below between the Grantee and its contracted permitted hazardous waste transporter (the contractor). For purposes of this agreement, the contractor shall mean the primary contractor and the Subcontractor means all additional contractors that the contractor hires for participating in the Project.

2. The Grantee shall spend all grant monies solely for the purpose of paying the Project's contractor and/or for paying the expenses associated with conducting the Project's educational component, as required under the NH Hazardous Waste Rules Env-HW 1003.07.

3. The Grantee shall enter into a contract with a contractor to perform the household hazardous waste collection project that includes, as a minimum, the following provisions:

a. That the contractor shall handle all household hazardous wastes collected at the project site as hazardous wastes, and shall comply with all state and federal laws and regulations governing hazardous waste, including but not limited to, the provisions of RSA 147-A and Chapter Env-WM 100 through Chapter Env-HW 1000 involving hazardous waste safety standards, transportation requirements, and requirements for proper generation, treatment, storage, and disposal of hazardous wastes. Said requirements shall include RSA 147-A, Chapter Env-HW 100 through Chapter Env-WM 1000, and those of the state(s) through which and to which the waste has been sent;

b. That the contractor must act as the generator of the hazardous wastes that it collects at the project site and that the contractor must sign the Project's manifest forms as such generator;

c. That the contractor must have all necessary permits and licenses to handle and transport hazardous wastes in New Hampshire and other states associated with the conduct of the project;

d. That the contractor may not assign or subcontract any of the duties to be performed under the contract without prior written approval by the Grantee and by the Department. Further, that any additional Subcontractor must also have all necessary permits and licenses to carry out the functions that are the subject of the subcontract;

e. That the contractor shall, at its sole expense, obtain and maintain in force, and shall require all Subcontractors to obtain and maintain in force, comprehensive public liability insurance against all claims of bodily injuries, death, or property damage, in amounts and terms complying with, at a minimum, all applicable state requirements for hazardous waste transporters, including NH Code of Administrative Rules Env-HW 603.12. Such policies shall cover the State and the Grantee as additional insured parties and shall comply, in form and substance, with all applicable provisions of the NH Liability Insurance Act, RSA Ch. 412, and the rules thereunder;

f. That the contractor shall transport all household hazardous wastes collected at the project site to an authorized treatment, storage, or disposal facility. Said facility shall be in compliance with appropriate state and federal requirements.

Page 2

Contractor Initials \_\_\_\_\_  
Date \_\_\_\_\_

**EXHIBIT A**  
**Page 2**

g. That the Grantee shall not pay the contractor until (1) the Department has received copies of all Project manifest forms required under Part Env-HW 510, including Copy 42 of all Project manifest forms signed by the operator of the permitted hazardous waste facility or facilities to which the Project's collected hazardous wastes were delivered, and (2) the Department has reviewed the Project's collection, handling, transportation, storage, treatment, recycling and disposal of hazardous waste for compliance with applicable state and federal requirements. The Department's payment of funds to the Grantee shall not be construed as a waiver of any past, present or future right, claim, or cause of action related to the performance of this agreement or the enforcement of any applicable state or federal law;

h. That the contractor shall adhere to a work plan and a site safety plan, such plans may be reviewed by the Department;

i. That the Department may exercise its authority to modify, suspend or terminate the Project if it decides that the Project poses a threat to human health or the environment; and

4. The Grantee shall conduct public education activities regarding household hazardous waste in accordance with the provisions of RSA 147-B:6, 14 and Section Env-HW 1003.07. Said activities shall include those set forth in the Grantee's application for Grant Monies, as approved by the Department.

5. The Grantee shall keep a court of persons participating in the Project and to conduct a questionnaire of said persons incorporating, at a minimum, the questions set forth on the Participant Exit Survey.

6. The Grantee shall conduct the collection portion of its project on or before the completion date shown in Section 1.1 of the contract. Failure to do so may result in termination of this agreement.

7. The Grantee shall allow the Department to have access to and conduct any monitoring of the Project deemed necessary by the Department to ensure compliance with the terms of the contract and with state and federal statutes and regulations.

Page 2

Contractor Initials \_\_\_\_\_  
Date \_\_\_\_\_

**EXHIBIT C**  
**Special Provisions**

1. The State reserves the right to audit the Grantee's expenditures for the Project and to extract and/or seek reimbursement for Grant Monies paid to the Grantee whenever, subsequent to payment of Grant Monies, it becomes known that any of the terms and conditions of this agreement were, in fact, not fulfilled.

2. Paragraph 13 of the General Provisions is amended in that the parties intend the Grantee to retain a Contractor in accordance with Exhibit A of this agreement.

Page 2

Contractor Initials \_\_\_\_\_  
Date \_\_\_\_\_

# ACORD Insurance Form

ACORD CERTIFICATE OF LIABILITY INSURANCE				OP ID SX TROP105	DATE (MM/DD/YYYY) 01/05/09
<b>PRODUCER</b> Barlocker Ins. Svs. - Salinas License #0580438 232 Monterey Street Salinas CA 93901 Phone: 831-424-6404 Fax: 831-424-0140		THIS CERTIFICATE IS ISSUED AS A MATTER OF INFORMATION ONLY AND CONFERS NO RIGHTS UPON THE CERTIFICATE HOLDER. THIS CERTIFICATE DOES NOT AMEND, EXTEND OR ALTER THE COVERAGE AFFORDED BY THE POLICIES BELOW.			
<b>INSURED</b> Tropical Creations, Inc. Tropical Creations Landscape Mgmt, Inc. Tropical Creations Interior Landscapes, Inc. 18555 Eddy St Northridge CA 91324		<b>INSURERS AFFORDING COVERAGE</b>		<b>NAIC #</b> 13978	
INSURER A: Florista' Mutual Insurance Co INSURER B: INSURER C: INSURER D: INSURER E:					
<b>COVERAGES</b> THE POLICIES OF INSURANCE LISTED BELOW HAVE BEEN ISSUED TO THE INSURED NAMED ABOVE FOR THE POLICY PERIOD INDICATED. NOTWITHSTANDING ANY REQUIREMENT, TERM OR CONDITION OF ANY CONTRACT OR OTHER DOCUMENT WITH RESPECT TO WHICH THIS CERTIFICATE MAY BE ISSUED OR MAY PERTAIN, THE INSURANCE AFFORDED BY THE POLICIES DESCRIBED HEREIN IS SUBJECT TO ALL THE TERMS, EXCLUSIONS AND CONDITIONS OF SUCH POLICIES. AGGREGATE LIMITS SHOWN MAY HAVE BEEN REDUCED BY PAID CLAIMS.					
INSR ADP LTR	TYPE OF INSURANCE	POLICY NUMBER	POLICY EFFECTIVE DATE (MM/DD/YY)	POLICY EXPIRATION DATE (MM/DD/YY)	LIMITS
A	GENERAL LIABILITY <input type="checkbox"/> COMMERCIAL GENERAL LIABILITY <input type="checkbox"/> CLAIMS MADE <input type="checkbox"/> OCCUR GEN'L AGGREGATE LIMIT APPLIES PER: <input checked="" type="checkbox"/> POLICY <input type="checkbox"/> PRO-JECT <input type="checkbox"/> LOC	PB11994	01/01/09	01/01/10	EACH OCCURRENCE \$ 1000000 DAMAGE TO RENTED PREMISES (Ea occurrence) \$ 100000 MED EXP (Any one person) \$ 5000 PERSONAL & ADV INJURY \$ 1000000 GENERAL AGGREGATE \$ 2000000 PRODUCTS - COMP/OP AGG \$ 2000000
A	AUTOMOBILE LIABILITY <input checked="" type="checkbox"/> ANY AUTO ALL OWNED AUTOS SCHEDULED AUTOS <input checked="" type="checkbox"/> HIRED AUTOS <input checked="" type="checkbox"/> NON-OWNED AUTOS	FMA008218	01/01/09	01/01/10	COMBINED SINGLE LIMIT (Ea accident) \$ 1000000 BODILY INJURY (Per person) \$ BODILY INJURY (Per accident) \$ PROPERTY DAMAGE (Per accident) \$
	GARAGE LIABILITY <input type="checkbox"/> ANY AUTO				AUTO ONLY - EA ACCIDENT \$ OTHER THAN EA ACC \$ AUTO ONLY: AGG \$
A	EXCESS/UMBRELLA LIABILITY <input checked="" type="checkbox"/> OCCUR <input type="checkbox"/> CLAIMS MADE DEDUCTIBLE \$ RETENTION \$	EX09452	01/01/09	01/01/10	EACH OCCURRENCE \$ 1000000 AGGREGATE \$ 1000000 \$ \$ \$
A	WORKERS COMPENSATION AND EMPLOYERS' LIABILITY EMPLOYER OR PARTNER'S BENEFITIVE OFFICER OR DIRECTOR EXCLUDED? If yes, describe under SPECIAL PROVISIONS below OTHER	WCN3017809	01/01/09	01/01/10	<input checked="" type="checkbox"/> WC STATU-TORY LIMITS <input type="checkbox"/> OTH-ER E.L. EACH ACCIDENT \$ 1000000 E.L. DISEASE - EA EMPLOYEE \$ 1000000 E.L. DISEASE - POLICY LIMIT \$ 1000000
A	Property	BP11994	01/01/09	01/01/10	BPP \$80,000 Ded \$500
DESCRIPTION OF OPERATIONS / LOCATIONS / VEHICLES / EXCLUSIONS ADDED BY ENDORSEMENT / SPECIAL PROVISIONS					
<b>CERTIFICATE HOLDER</b> NH DES Proof Of Insurance			<b>CANCELLATION</b> SHOULD ANY OF THE ABOVE DESCRIBED POLICIES BE CANCELLED BEFORE THE EXPIRATION DATE THEREOF, THE ISSUING INSURER WILL ENDEAVOR TO MAIL 30 DAYS WRITTEN NOTICE TO THE CERTIFICATE HOLDER NAMED TO THE LEFT, BUT FAILURE TO DO SO SHALL IMPOSE NO OBLIGATION OR LIABILITY OF ANY KIND UPON THE INSURER, ITS AGENTS OR REPRESENTATIVES. AUTHORIZED REPRESENTATIVE		
ACORD 25 (2001/08)			© ACORD CORPORATION 19		

# Certificate of Authorization

1. Signed by town clerk

2. Authorizes someone to sign contract

3. Must be the same person who signs the contract

4. Notarized

## Certificate of Authorization: Lancaster

I, Jean E. Oleson, Town Clerk of Lancaster, New Hampshire, hereby certify that  
on July 6, 2009, the Board of Selectmen voted to authorize  
*Date of Meeting*

Dennis Patnoe to sign contracts on behalf of the Town with respect to  
*Grantee Signor*

Grant contracts with the New Hampshire Department of Environmental Services.

This authority has not been amended or annulled.

Jean E. Oleson  
*Signature of Town Clerk*

12/7/2012  
*Date*

Jean E. Oleson, Lancaster Town Clerk

## Notarization

State of New Hampshire, County of Coos. On 12/7/12 before me,  
*Date*

Charity Blanchette, the undersigned officer, personally appeared  
*Printed Name of Notary Public or J.P.*

Jean E. Oleson, who acknowledged herself to be the Town Clerk of the

Town of Lancaster, New Hampshire, and that she, Town Clerk being authorized

to do so, executed the foregoing instrument for the purposes therein contained.

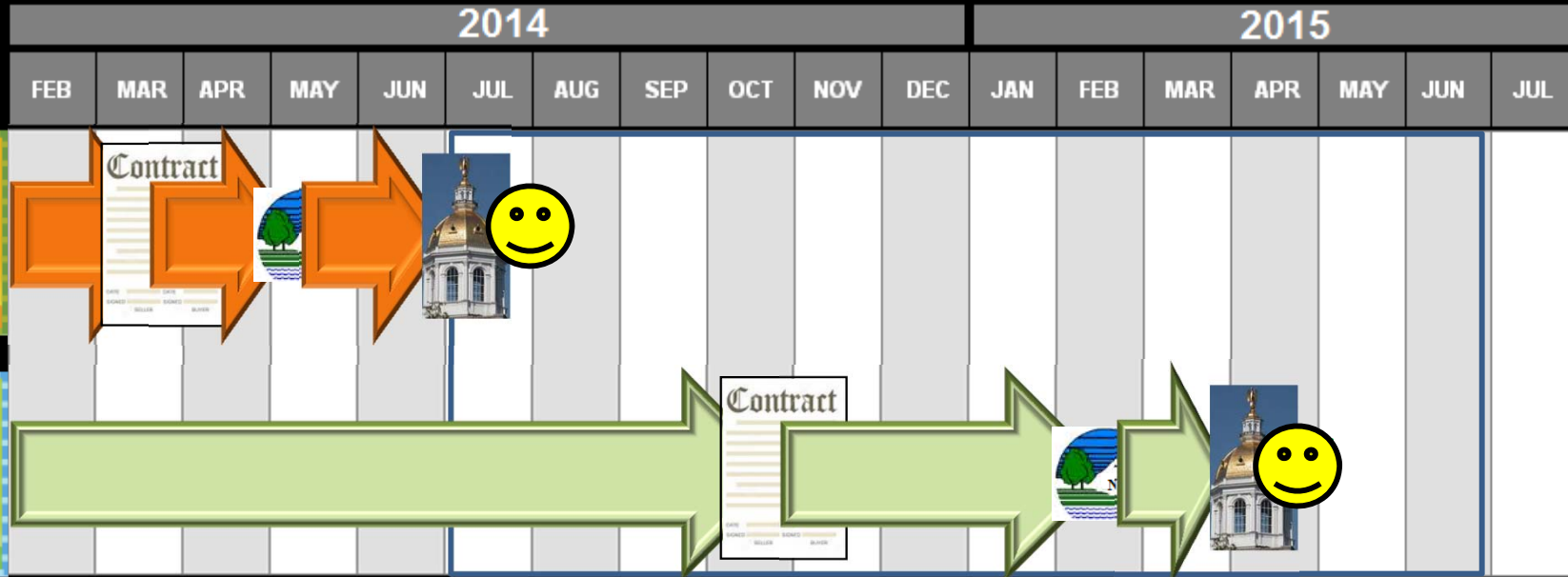
In witness hereof, I hereunto set my hand and official seal.

Charity Blanchette  
*Signature of Notary Public or Justice of the Peace*

Commission Expiration Date: 3/30/2016



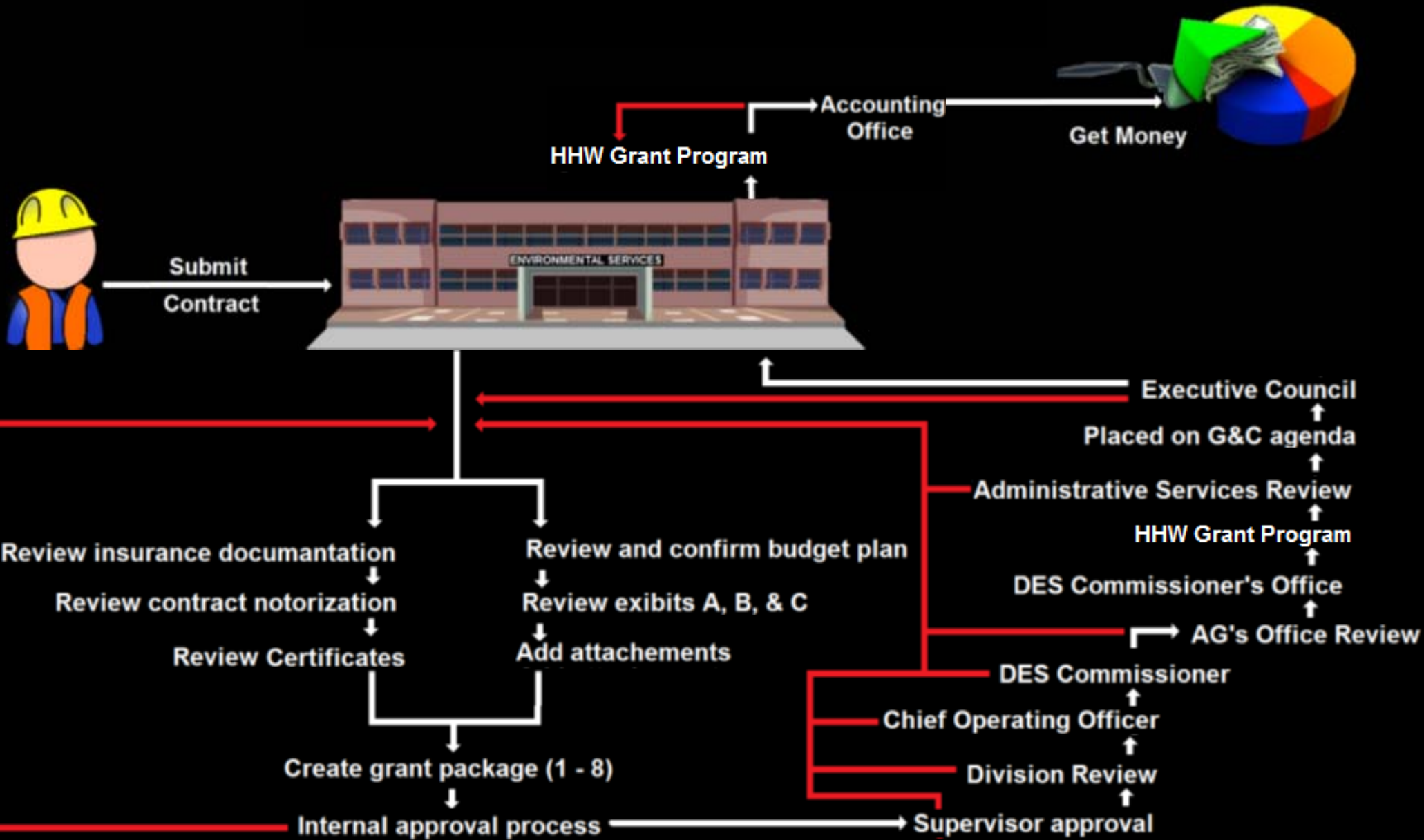
# Stay on Schedule!



# Reimbursement

- Cover Letter
  - Grantee's letterhead
  - Dates of collection(s)
  - Monies requested
- Hazardous Waste Manifests
  - Signed copy #3
- Itemized Receipts
- Photocopy of contract
  - Signature page only
- Wait three weeks to hear from accounting

# The Big Picture





# What to Remember

All applications are due Feb 1<sup>st</sup> & must be received by DES before the grant contracts can be sent out.

More collection opportunities = more money.

Grant contracts usually go out mid March or April.

DES must have your completed contract 60 days before your collection.



Cascade

NEW ZEALAND

20 ACTIONPACKS

Swiffer  
DUSTERS

FURNITURE CARE

Remember

Wasp & Hornet  
KILLER

seventh  
GENERATION  
& clear

ODOR & DISINFECTANT  
ELIMINATOR  
FOR CARPET & RUGS



# Most Dangerous Items in Your Home



## Ammonia & Hydrocarbons

- Vision loss
- Bloody stools
- Vomiting blood
- Collapse
- Coma
- Convulsions
- Necrosis (holes) in the skin or underlying muscle
- Kidney Failure



# Most Dangerous Items in Your Home



## Hydrocarbons & Solvents

- Agitation
- Confusion
- Coma
- Breathing difficulty
- Severe stomach pain
- Throat swelling
- Vomiting blood
- Blood in your stools
- Skin burns
- Vision loss
- Low blood pressure that develops rapidly



# Most Dangerous Items in Your Home

## Sodium Hydroxide & Hydrogen Chloride

110° - 120°



- Abdominal pain
- Throat swelling
- Collapse
- Loss of vision
- Mouth pain (severe)
- Rapid drop in blood pressure
- Throat pain (severe)
- Severe tissue damage
- Brain Damage
- Death





**! WARNING**

**CAUTION** !

**DANGER POISON INFLAMMABLE**

**DANGER: CONTENTS UNDER PRESSURE. MAY CAUSE BURNS, INJURIOUS IF SWALLOWED. Read carefully other precautions on this label. KEEP OUT OF REACH OF CHILDREN. NET WT. 16 OZ. (1 LB)**

**WARNING: DO NOT MIX AMMONIA WITH CHLORINE TYPE BLEACHES OR OTHER CHLORINATED CHEMICALS, SUCH AS DRAIN OR TOILET BOWL CLEANERS. COMBINING THESE PRODUCTS WILL PRODUCE A POISONOUS GAS THAT CAN BE FATAL.**

**KEEP OUT OF REACH OF CHILDREN. DANGER: MAY CAUSE EYE BURNS. SKIN IRRITANT. HARMFUL IF SWALLOWED OR INHALED. See back panel for additional precautions and First Aid information.**

**DANGER! EXTREMELY FLAMMABLE. VAPOR HARMFUL. HARMFUL OR FATAL IF SWALLOWED. SKIN AND EYE IRRITANT. VAPORS MAY CAUSE FLASH FIRE. Carefully read and follow all vapors elsewhere on this container. ONE GALLON (3.785 LITERS)**

**HIGHLY FLAMMABLE**

**NO BLEACH DROP-INS. NO BLEACH DROP-INS.**

**DO NOT USE IN-TANK DROP-IN TOILET BOWL CLEANERS CONTAINING BLEACH OR CHLORINE. Use of such products will: (1) RESULT IN DAMAGE to tank components and MAY CAUSE FLOODING and PROPERTY DAMAGE and (2) VOID FLUIDMAST. DO NOT overlighten nets or tank/bowl in**

**DANGER**

**HAZARD TO HUMANS AND DOMESTIC ANIMALS. CAUTION: CAUSES MODERATE EYE IRRITATION. Avoid contact with eyes, skin or clothing. Wash thoroughly with soap and water after handling. Avoid recontact with hands.**

**POISON**

**Irritant**

**Contains water, sodium hypochlorite, sodium hydroxide. Contains no phosphorus. OUT OF REACH OF CHILDREN. WARNING: EYE IRRITANT. For additional**

**DANGER: KEEP OUT OF REACH OF CHILDREN. Harmful if swallowed. May burn eyes, skin and mucous membranes on contact. Do not use or mix Mister Plumber with ammonia, toilet bowl cleaners or other drain openers as hazardous gases may be released and a violent eruption may occur. Avoid contact with skin, eyes, mucous membranes and clothing.**





